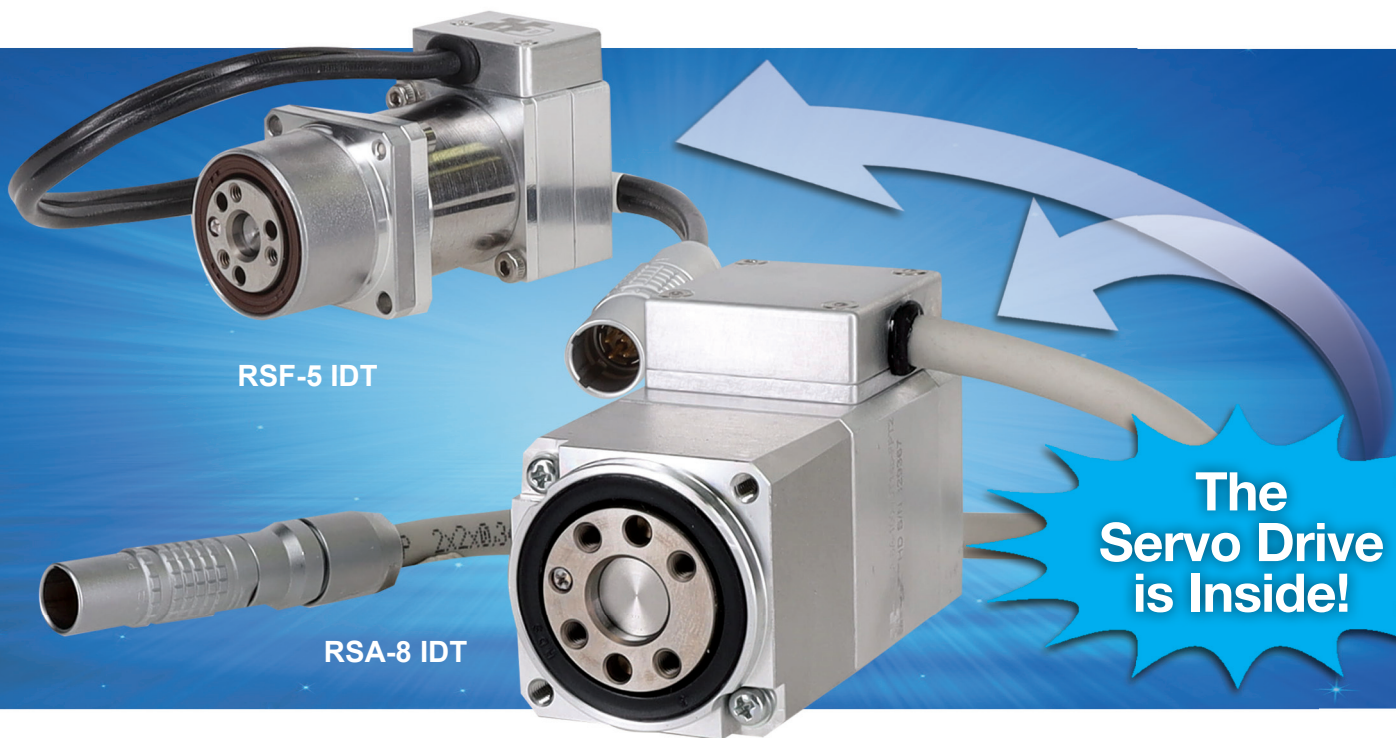


NEW!

HarmonicDrive®

Two New Integrated Actuators



RSF-5B Supermini Actuator and RSA-8A Mini Actuator with Integrated Servo Drives

Sold & Serviced By:

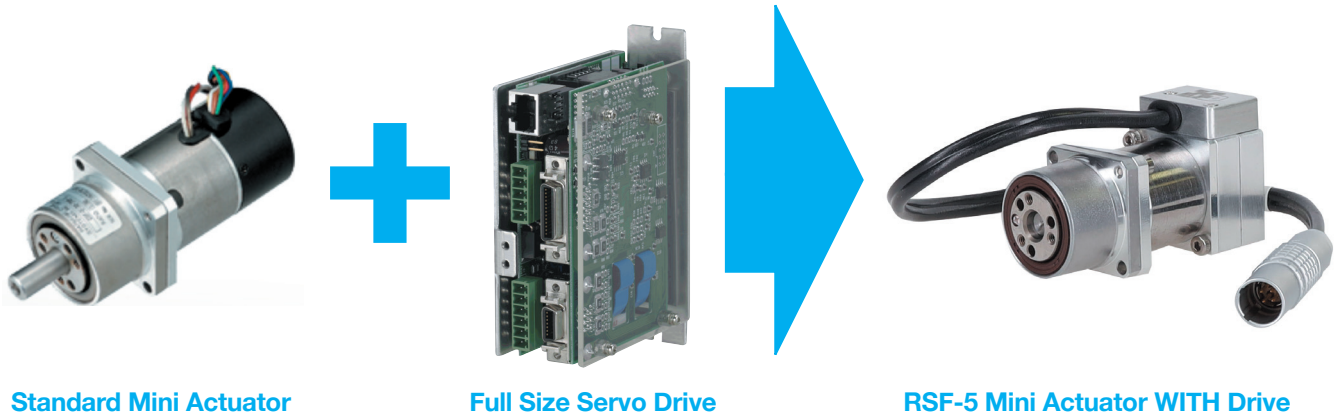
 **ELECTROMATE**

Toll Free Phone (877) SERV098

www.electromate.com

sales@electromate.com

Mini Actuator with Integrated Servo Drive



Standard Mini Actuator

Full Size Servo Drive

RSF-5 Mini Actuator WITH Drive

The compact RSF-5 and RSA-8 mini actuators with zero backlash Harmonic Drive[®] gears have high torque density with exceptional accuracy and repeatability. The actuators feature an integrated servo drive utilizing CANopen[®] communication. This evolutionary product eliminates the need for an external drive and greatly simplifies cabling while retaining high-positional accuracy and torsional stiffness in a compact housing.

Since it communicates via CANopen, only 4 conductors are needed: CANH, CANL, +24VDC, 0VDC. A single-turn 14bit (16384 cpr) absolute encoder has been integrated.

■ Features

- Actuator + **Integrated Servo Drive** utilizing CANopen[®] communication conforming to DS402 and DS301
- 24VDC Nominal +7 to +30VDC Supply Voltage Range
- Single Axis BLDC Motor Controller/Drive with CAN & TTL-UART Interface
- Field Oriented Control
- **Single Cable** with only 4 conductors needed: CANH, CANL, +24VDC, 0VDC
- Zero Backlash
- Replaceable Flex-rated Cable Assembly
- 14bit (16384 cpr) resolution motor encoder
- **Control Modes** Including Torque, Velocity, and Position Control, CSP, CSV, CST
- Harmonic Drive HDL Software - for initial tuning, commissioning, and analysis
- Homing modes include: single-ended, double-ended, double-ended with 16bit autoscale hardstop homing or teachable position

Options:

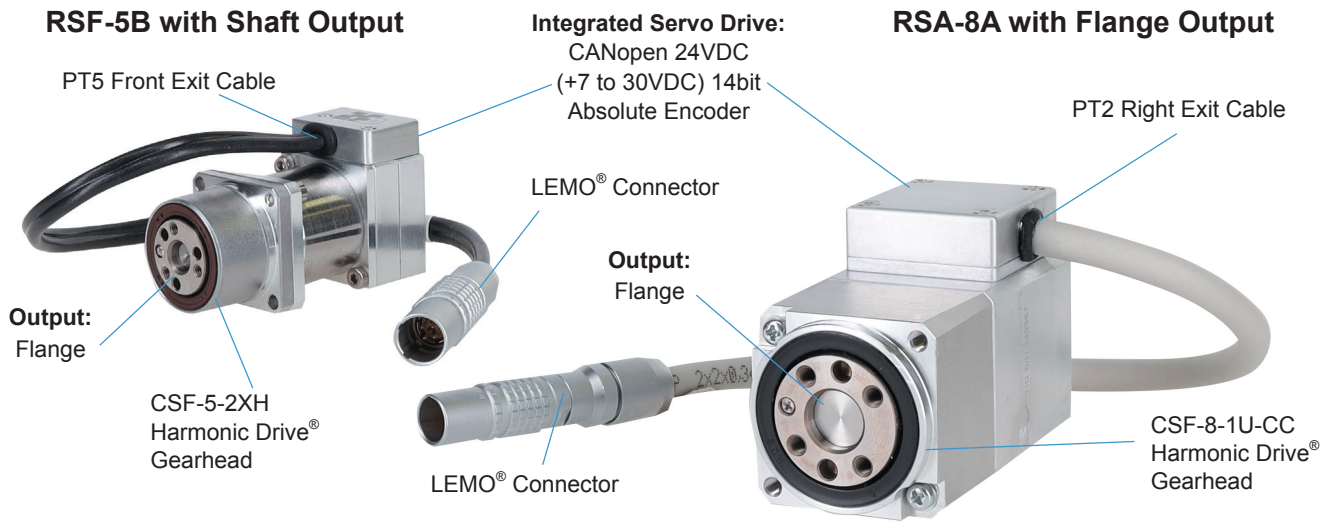
- Flex-rated extension cables with sealed connectors

Sold & Serviced By:

 **ELECTROMATE**

Toll Free Phone (877) SERV098
www.electromate.com
sales@electromate.com

Mini Actuators with Integrated Servo Drives



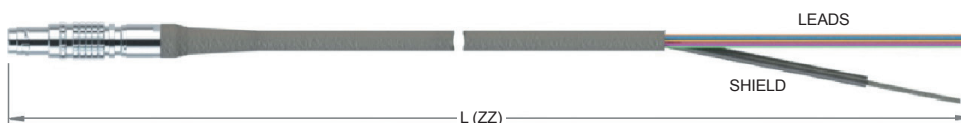
Ordering Code (Mini Actuator with Integrated Drive)



| | | | |
|---|-----------------------------|---|--|
| 1 | Model | RSF Supermini Series | RSA Mini Series |
| 2 | Size | 5 | 8 |
| 3 | Design Version | B | A |
| 4 | Gear Ratio | 30, 50, 100 | |
| 5 | Encoder Type and Resolution | IDT14b - Integrated Drive 14bit resolution absolute encoder on motor input | |
| 6 | Output | Blank - Shaft Output F - Flange Output | |
| 7 | Cable Exit Options | PT1 - Rear exit cable PT5 - Front exit cable | PT1 - Rear exit cable PT2 - Right exit cable PT3 - Left exit cable PT5 - Front exit cable |
| 8 | Special Specification | Blank - Standard Product SP ____ - Special Specification Code | |

Optional Extension Cable 3 Lengths Available (ZZ): 3m (03), 5m (05), 10m (10)

| Description |
|----------------|
| CBL-DZZ-L004-N |



■ Specifications RSF Supermini with Integrated Servo Drive

| Item | | Ratio | RSF-5B | | |
|--|--------------------|---------------------|--|-----------------------|-----------------------|
| | | | 30 | 50 | 100 |
| Maximum torque | | Nm | 0.5 | 0.9 | 1.4 |
| Maximum speed | | rpm | 150 | 90 | 45 |
| Torque constant | | Nm/A _{rms} | 0.3 | 0.54 | 1.1 |
| Motor Maximum current | | A _{rms} | 2.3 | 2.2 | 1.7 |
| Motor Allowable continuous current | | A _{rms} | 1.11 | 0.92 | 0.76 |
| Input Power supply voltage | | V | 24VDC (+7 to +30VDC) | | |
| EMF constant | | V/(rpm) | 0.04 | 0.07 | 0.13 |
| Phase resistance | | Ω(20°C) | 0.82 | | |
| Phase inductance | | mH | 0.27 | | |
| Number of poles | | | 8 | | |
| Moment of inertia | GD ² /4 | kgm ² | 7.09x10 ⁻⁵ | 1.97x10 ⁻⁴ | 7.88x10 ⁻⁴ |
| Allowable moment load | | Nm | 15 | | |
| Moment Stiffness | | Nm/rad | 7.41 x 10 ² | | |
| Output shaft resolution <small>(Note) 1</small> | | counts/rev | 491,520 | 819,200 | 1,638,400 |
| One-way positioning accuracy | | arc min | 4 | 3 | 3 |
| Mass | | g | 77 | | |
| Enclosure | | | Totally enclosed self-cooled | | |
| Ambient environment specification | | | 0 to 40° C ambient operational temperature range, Storage temperature is -20 to 60° C with humidity 20 to 80%RH (non-condensing). Free from dust, dirt, metallic powder, corrosive gas, flammable gas, oil mist, and others. Avoid outdoor use or direct sunlight. Altitude: 1,000 m or less. Motor insulation: 100 MΩ (500 VDC) or higher. Dielectric strength: 1500 VAC/1 min. Insulation class: B | | |
| Mounting direction | | | Can be installed in any direction | | |

* The table shows typical output values.

1. Motor ABS encoder resolutions are obtained by [motor encoder resolution] x [reduction ratio].

Sold & Serviced By:



Toll Free Phone (877) SERV098
www.electromate.com
sales@electromate.com

■ Specifications RSA-8 Mini with Integrated Servo Drive

| Item | | Ratio | RSA-8A | | |
|-------------------------------------|--------------------|---------------------|--|-----------------------|-----------------------|
| | | | 30 | 50 | 100 |
| Maximum torque | | Nm | 1.8 | 3.3 | 4.8 |
| Maximum speed | | rpm | 283.3 | 170.0 | 85.0 |
| Torque constant | | Nm/A _{rms} | 0.7 | 1.2 | 2.0 |
| Motor Maximum current | | A _{rms} | 4.0 | 4.0 | 3.5 |
| Motor Allowable continuous current | | A _{rms} | 2.05 | 2 | 1.7 |
| Input Power supply voltage | | V | 24VDC (+7 to +30VDC) | | |
| EMF constant | | V/(rpm) | 0.051 | 0.085 | 0.170 |
| Phase resistance | | Ω(20°C) | 0.8 | | |
| Phase inductance | | mH | 0.285 | | |
| Number of poles | | | 14 | | |
| Moment of inertia | GD ² /4 | kgm ² | 7.74x10 ⁻⁴ | 2.15x10 ⁻³ | 8.60x10 ⁻³ |
| Allowable moment load | | Nm | 3.46 | | |
| Moment Stiffness | | Nm/rad | 2.76 x 10 ³ | | |
| Output shaft resolution (Note) 1 | | counts/rev | 491,520 | 819,200 | 1,638,400 |
| One-way positioning accuracy | | arc min | 2 | 2 | 2 |
| Mass | | g | 200 (190 with F option) | | |
| Enclosure | | | Totally enclosed self-cooled | | |
| Ambient environment specification | | | 0 to 40° C ambient operational temperature range, Storage temperature is -20 to 60° C with humidity 20 to 80%RH (non-condensing). Free from dust, dirt, metallic powder, corrosive gas, flammable gas, oil mist, and others. Avoid outdoor use or direct sunlight. Altitude: 1,000 m or less. Motor insulation: 100 MΩ (500 VDC) or higher. Dielectric strength: 1500 VAC/1 min. Insulation class: B | | |
| Mounting direction | | | Can be installed in any direction | | |

* The table shows typical output values.

1. Motor ABS encoder resolutions are obtained by [motor encoder resolution] x [reduction ratio].

Sold & Serviced By:



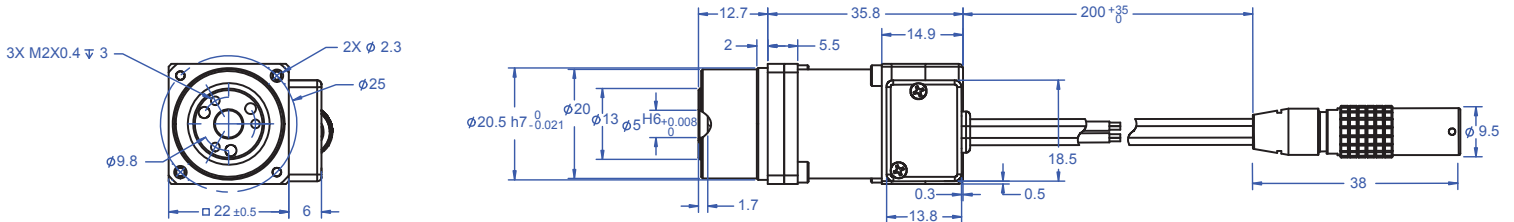
Toll Free Phone (877) SERV098
 www.electromate.com
 sales@electromate.com

RSF Supermini Outline Dimensions

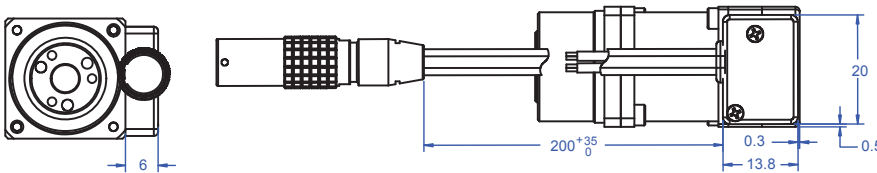
FLANGE OUTPUT

PT1 rear exit cable

[mm]

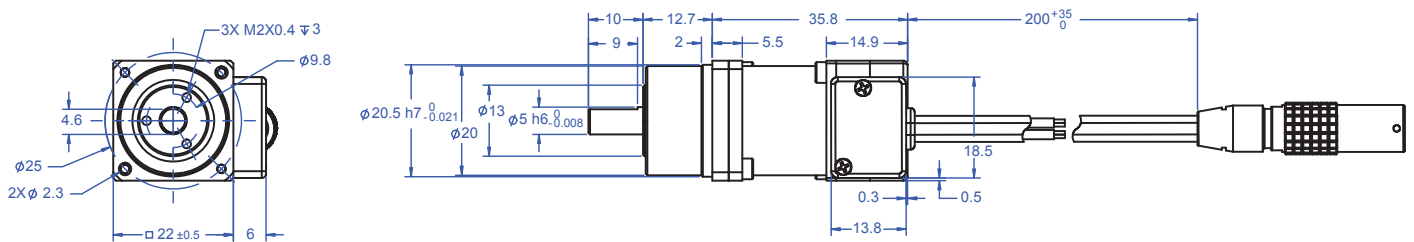


PT5 front exit cable

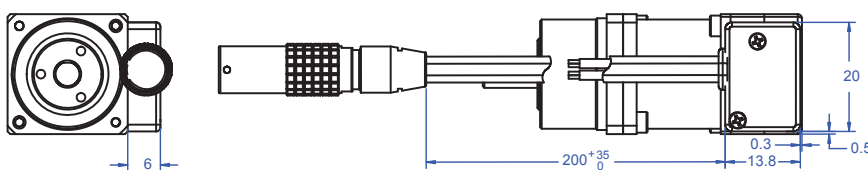


SHAFT OUTPUT

PT1 rear exit cable



PT5 front exit cable

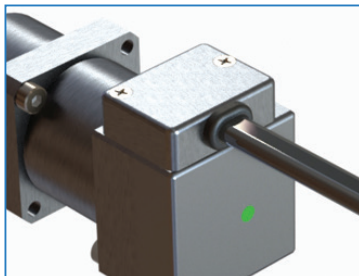


RSF-5B Exit Options

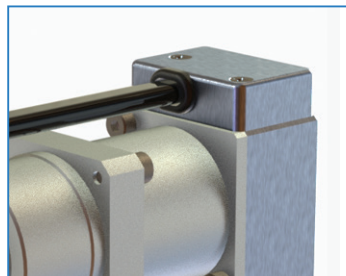
Cable housing dimensions and mounting dimensions are the same for both PT options.

Key

- PT1 Pigtail cable, rear exit (opposite output)
- PT5 Pigtail cable, front exit



PT1 Rear Exit

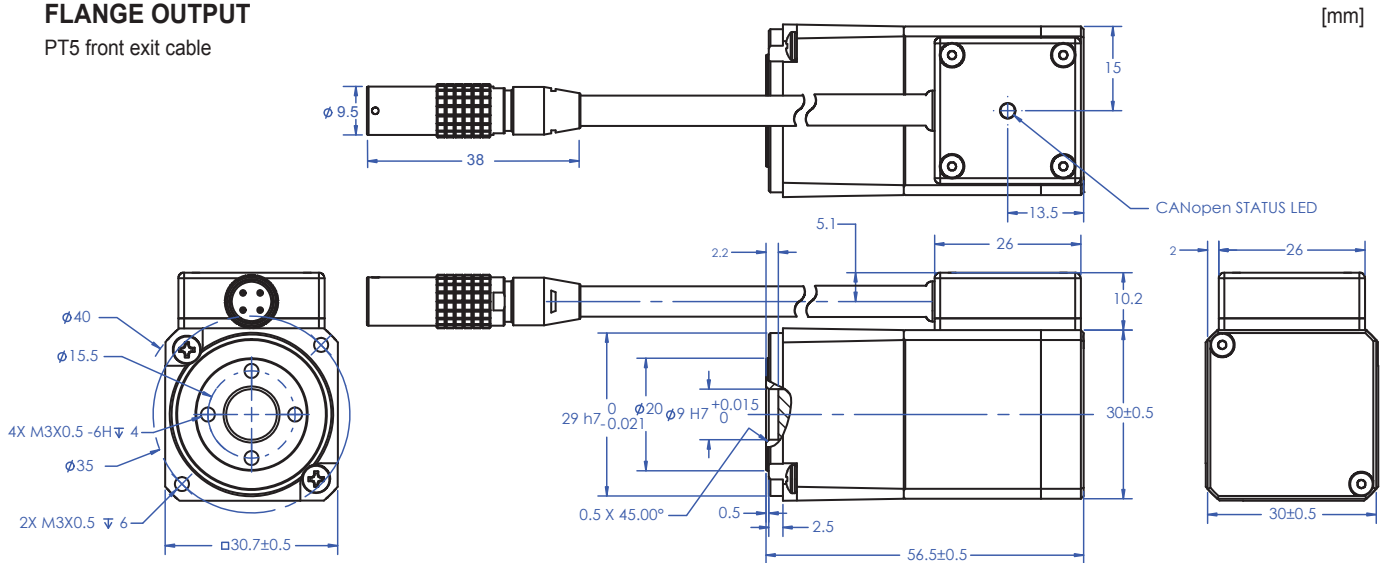


PT5 Front Exit

■ RSA-8 Mini Outline Dimensions

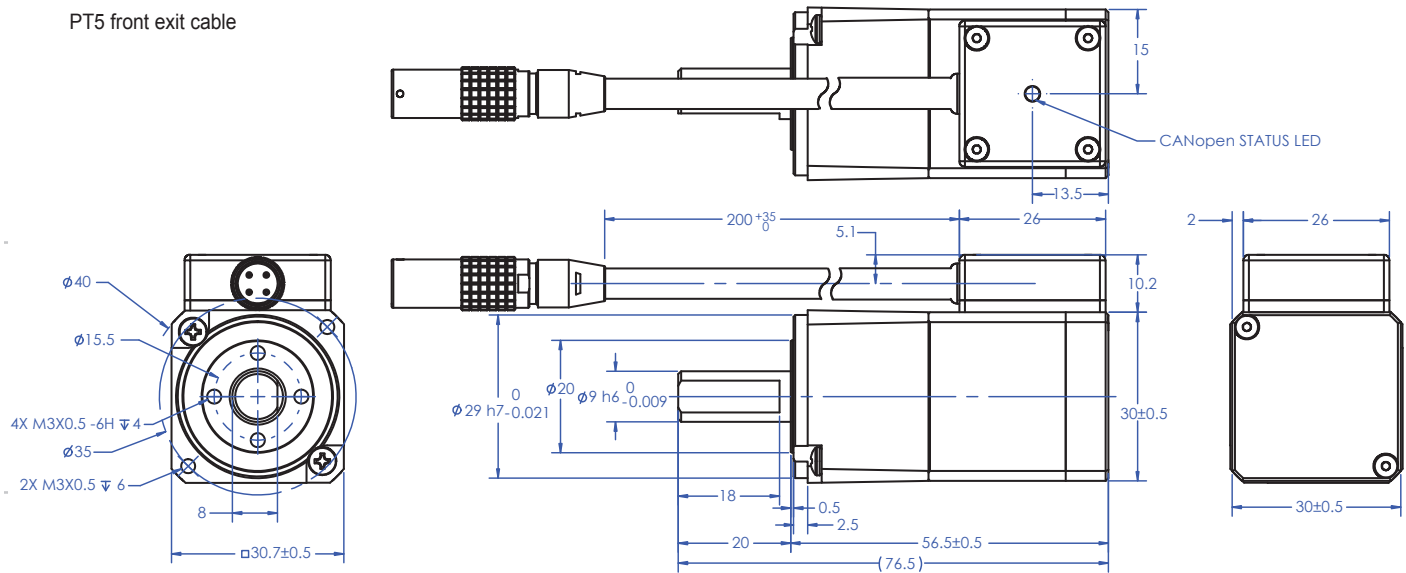
FLANGE OUTPUT

PT5 front exit cable



SHAFT OUTPUT

PT5 front exit cable

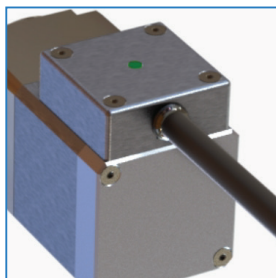


■ RSA-8A Exit Options

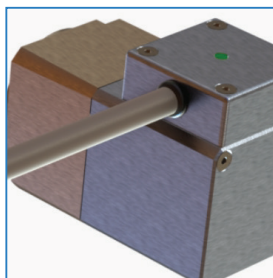
Cable housing dimensions and mounting dimensions are the same for all PT options.

Key

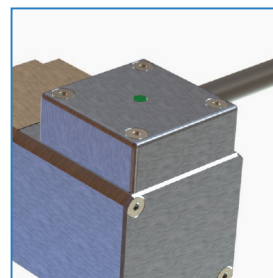
- PT1 Pigtail cable, rear exit (opposite output)
- PT2 Pigtail cable, right exit (of output side)
- PT3 Pigtail cable, left exit (of output side)
- PT5 Pigtail cable, front exit



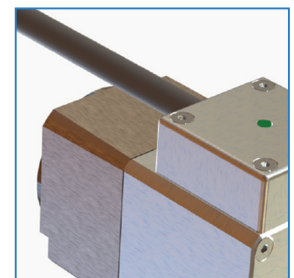
PT1 Rear Exit



PT2 Right Exit



PT3 Left Exit



PT5 Front Exit

Operating Range

The graphs show the operating range for RSF-5 and RSA-8 Mini Series actuators with an integrated drive.

Continuous Motion Range

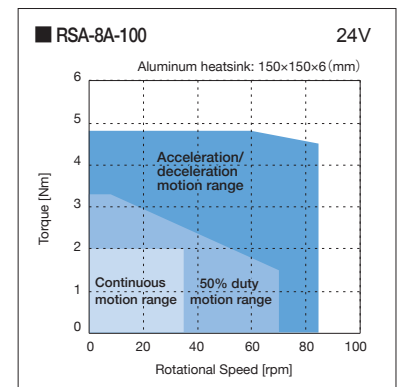
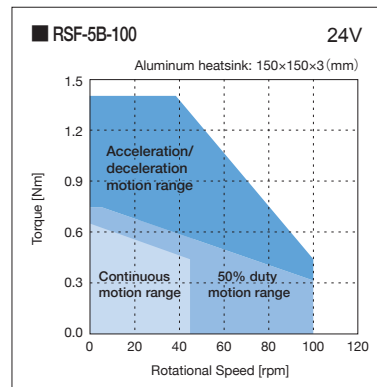
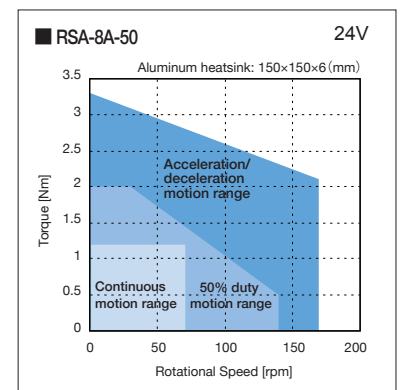
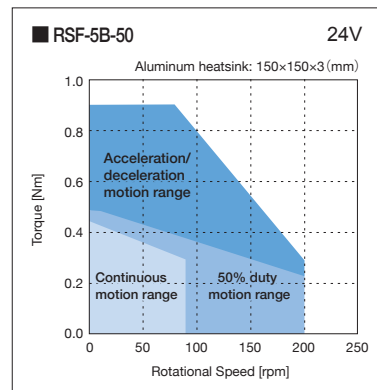
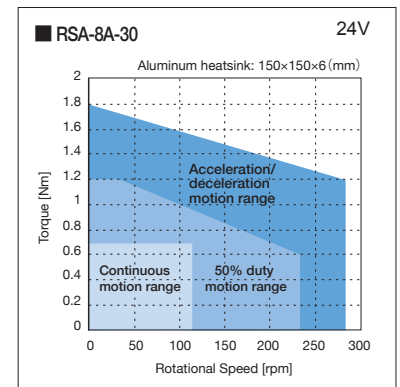
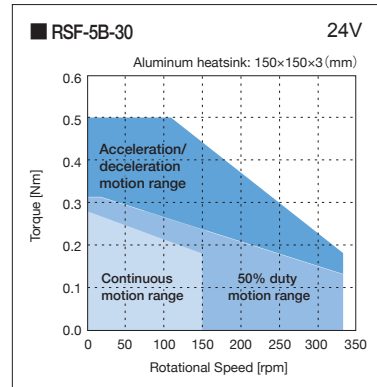
The range allows continuous operation of the actuator.

50% Duty Motion Range This range indicates the torque/speed where 50% duty cycle operation is permitted (the ratio of operating time and delay time is 50:50).

Motion Range During Acceleration and Deceleration

This range indicates the torque/speed which the actuator can be operated momentarily. The range allows instantaneous operation such as during acceleration and deceleration.

The continuous and 50% duty motion ranges shown on each graph are measured when the actuator is mounted to an aluminum heatsink as specified.



Sold & Serviced By:



Toll Free Phone (877) SERV098

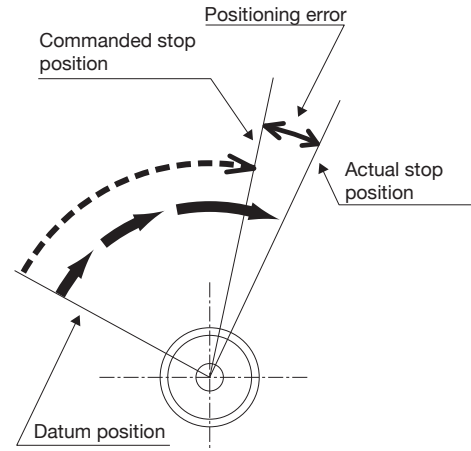
www.electromate.com

sales@electromate.com

One-Way Positional Accuracy

The one-way positioning accuracy is defined as the maximum positional difference between the commanded position and the actual stop position when a series of positioning moves are performed in the same rotation direction. (Refer to JIS B-6201-1987).

The RSF Supermini actuator incorporates a Harmonic Drive® gear which inherently has high-rotational position accuracy. Because of the gearing's high ratio, any rotational error at the input (i.e. motor shaft position error or motor feedback error) is reduced by a factor of the ratio (1/ratio) and typically becomes negligible at the output. Therefore most of the error is represented by the transmission error of the Harmonic Drive gear itself.



One-Way Positioning Accuracy

| Item | | Size | RSF-5B | | |
|-----------------------------|---------|------|-----------------------|-----------------------|-----------------------|
| | | | 30 | 50 | 100 |
| One-Way Positional Accuracy | arc min | | 4 | 3 | 3 |
| | rad | | 1.20×10^{-3} | 0.87×10^{-3} | 0.87×10^{-3} |

One-Way Positioning Accuracy

| Item | | Size | RSA-8A | | |
|-----------------------------|---------|------|-----------------------|-----------------------|-----------------------|
| | | | 30 | 50 | 100 |
| One-Way Positional Accuracy | arc min | | 2 | 2 | 2 |
| | rad | | 5.82×10^{-4} | 5.82×10^{-4} | 5.82×10^{-4} |

Output Bearing Specifications

| Size | Pitch Circle | Offset | Basic Rated Load | | Allowable moment load | Moment stiffness | Allowable radial load | Allowable axial load |
|------|--------------|--------|--------------------------|-------------------------|-----------------------|--------------------|-----------------------|----------------------|
| | dp | R | Basic dynamic rated load | Basic static rated load | | | | |
| | mm | mm | $\times 10^2 \text{N}$ | $\times 10^2 \text{N}$ | | | | |
| 5 | 13.5 | 4.85 | 9.14 | 7.63 | 0.89 | 7.41×10^2 | 90 | 270 |
| 8 | 20.5 | 7.3 | 21.6 | 19.0 | 3.46 | 2.76×10^3 | 200 | 630 |

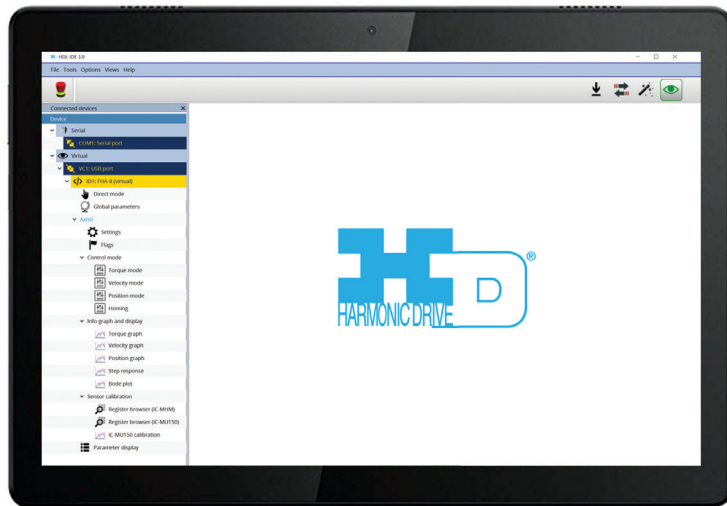
* The value of the moment stiffness is the average value.

■ HDL-IDE 3.0 Software:

HDL-IDE 3.0 software provides the ability to setup or commission the RSF-5B and RSA-8A Integrated actuator without connecting to a CANopen master controller. A single actuator can connect to a personal computer or laptop with a CAN communication converter, a termination resistor and a power supply. All 256 parameters, including the tuning parameters and 256 general user variables can be set and stored to be recognized by the CANopen master controller operating the specific application. The following are some of the features included in HDL-IDE 3.0 software:

Features

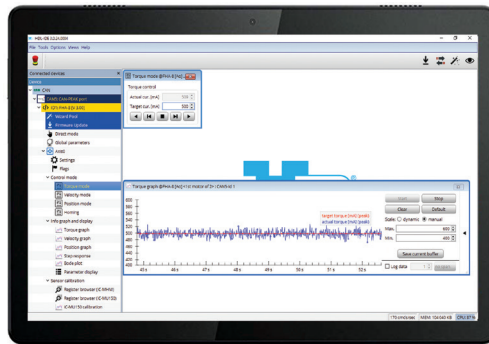
- Torque Mode and Graph
- Velocity Mode and Graph
- Position Mode and Graph
- Homing Mode
 - Limit Switch
 - Current Position
 - Hardstop Homing
- Step Response
- Bode Plot
- Parameter List
- Virtual Mode (shown)



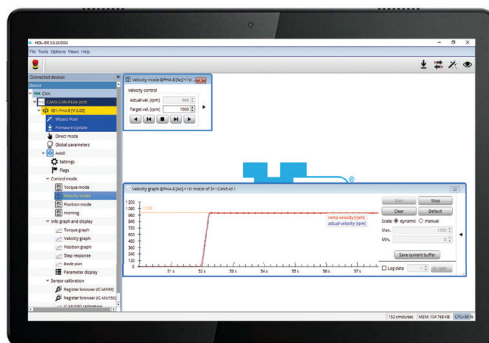
Bode Plot and Settings



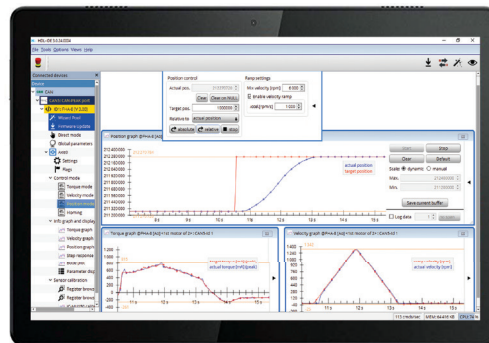
Torque Mode



Velocity Mode



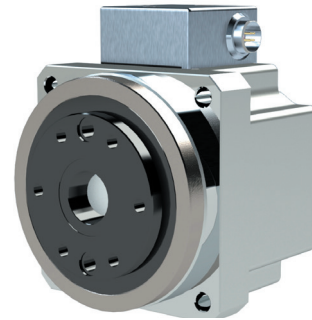
Position Mode



■ Actuators with an Integrated Servo Drive

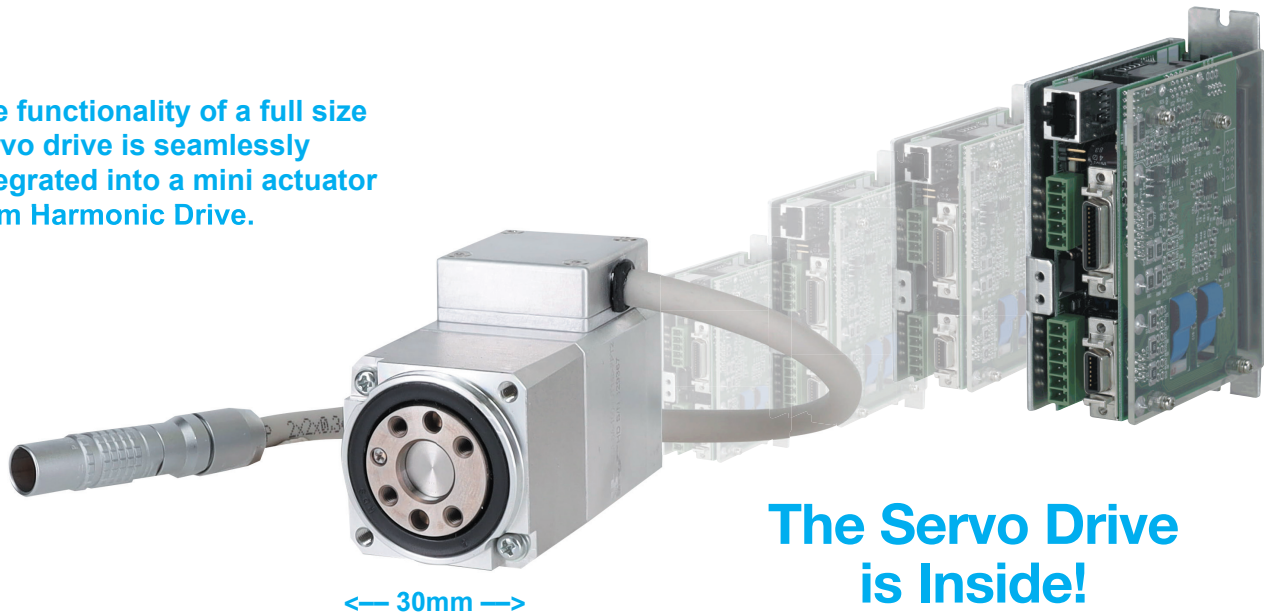
An integrated actuator from Harmonic Drive eliminates the need for a separate servo drive to be connected to the system. RSF-5B-IDT and RSA-8A-IDT join the new Integrated Actuator product category, along with 3 models of FHA-IDT, sizes 8, 11 and 14.

- Mitigates cable management concerns
- No encoder cables connected to the servo drive and therefore no wire harnesses or cable tracks and associated electrical noise concerns
- Reduction in number of potential failures with less connections
- Simplifies the control hardware saving cabinet space
- Eliminate the need for a separate drive
- Matched motor and drive for optimal performance and simple system integration
- Lower complete solution cost with less cabling and installation time



FHA-C Mini Actuator
with Servo Drive

The functionality of a full size servo drive is seamlessly integrated into a mini actuator from Harmonic Drive.



The Servo Drive
is Inside!

Sold & Serviced By:

 **ELECTROMATE**

Toll Free Phone (877) SERV098

www.electromate.com

sales@electromate.com

Harmonic Drive LLC

Sold & Serviced By:



Toll Free Phone (877) SERV098
www.electromate.com
sales@electromate.com

Harmonic Drive is a registered trademark of Harmonic Drive LLC. CANopen is a registered trademark of CAN in Automation. LEMO is a registered trademark of INTERLEMO HOLDINGS.



Rev 20210322

All efforts have been made to ensure that the information in this catalog is complete and accurate. However, Harmonic Drive LLC is not liable for any errors, omissions or inaccuracies in the reported data. Harmonic Drive LLC reserves the right to change the product specifications, for any reason, without prior notice. © 2021 Harmonic Drive. All rights reserved.